

Quinta do Peru
Sesimbra - Azeitão

V5 – 360m²

Villa - Plot 197



Quinta do Peru has a privileged location only 30 minutes south of Lisbon and with easy access (38° 32'31,98"N 9° 03'04.61"W) .

April 25 Bridge

-After the bridge April 25, since the A2 take exit 3 to Barreiro / Moita. After the toll, turn right towards Coima and follow the directions of the field.

Vasco da Gama Bridge

-Following Vasco da Gama Bridge take exit 1 for IC 13 Barreiro and Montijo towards A2-Before the toll, turn right towards Coima.



Description

Condomínio Quinta do Peru is near the Natural Park of Sierra Arrábida, near the magnificent beaches, like Sesimbra, Alfarim and Portinho Arrábida and is surrounded in a forest of pines and oaks. In this resort, we enjoy the golf club with school and it has a restaurant, a tennis court and a children's club.



A unique place to live

- 162 hectares, with low density of construction;
- Gated community with concierge and security 24 hours a day throughout the year;
- Golf Course 18 holes, designed by architect Rocky Roquemore and distinguished as 2nd best
- Golf course in the country and 57 in the European Ranking
 - 2 Driving Range;
- Club House;
- Tennis and Playground;
- Restaurants.



Property exceptional condominium located in the distinctive "Quinta do Peru." The deployment of this house was designed and strategically designed to enjoy a magnificent view, one of the most beautiful of the complex.



Details of Villa

- Communication system and security Smart Home;
- Parking area outside and inside for 2 cars;
- Automatic irrigation system for landscape;
- Swimming pool (10*5)



Details of Villa

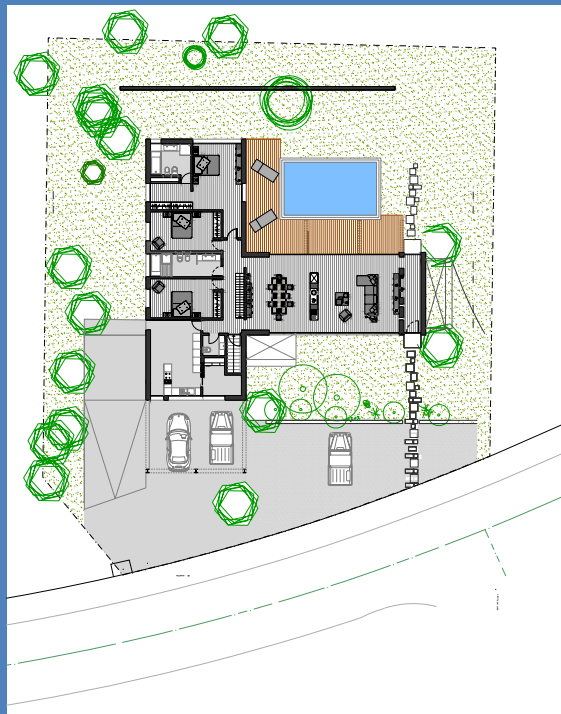
- Pre-installation of air conditioning
- Cable TV;
- Suite and rooms with hardrobes;
- Central Vacuum;
- Flooring of Kambala.



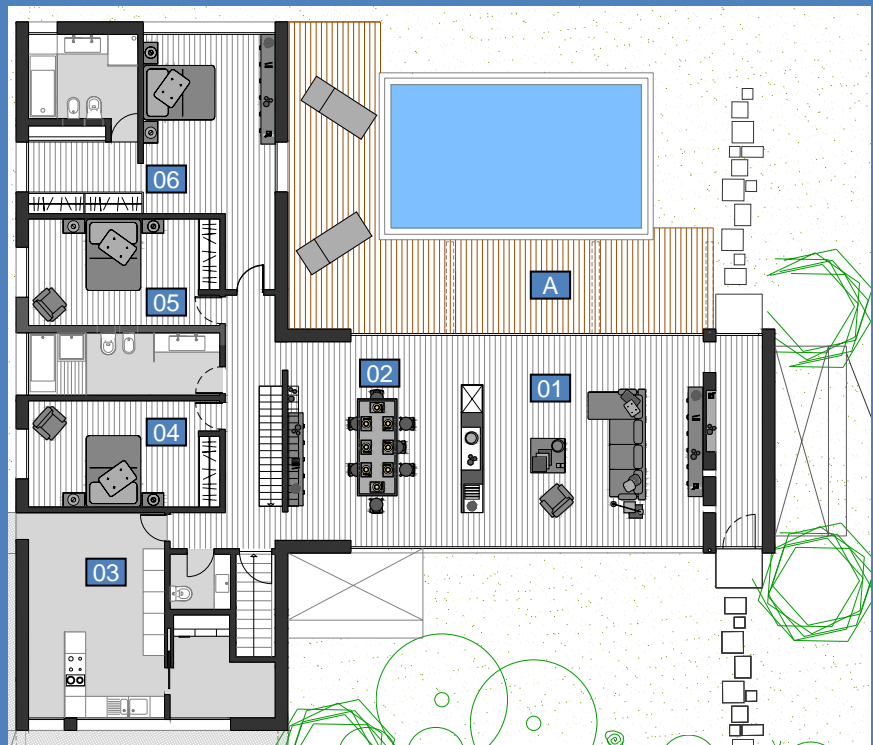
Details of Villa

- Fully equipped kitchen AEG;
- Pergolas to the lanscape;
- Automatic garage door;

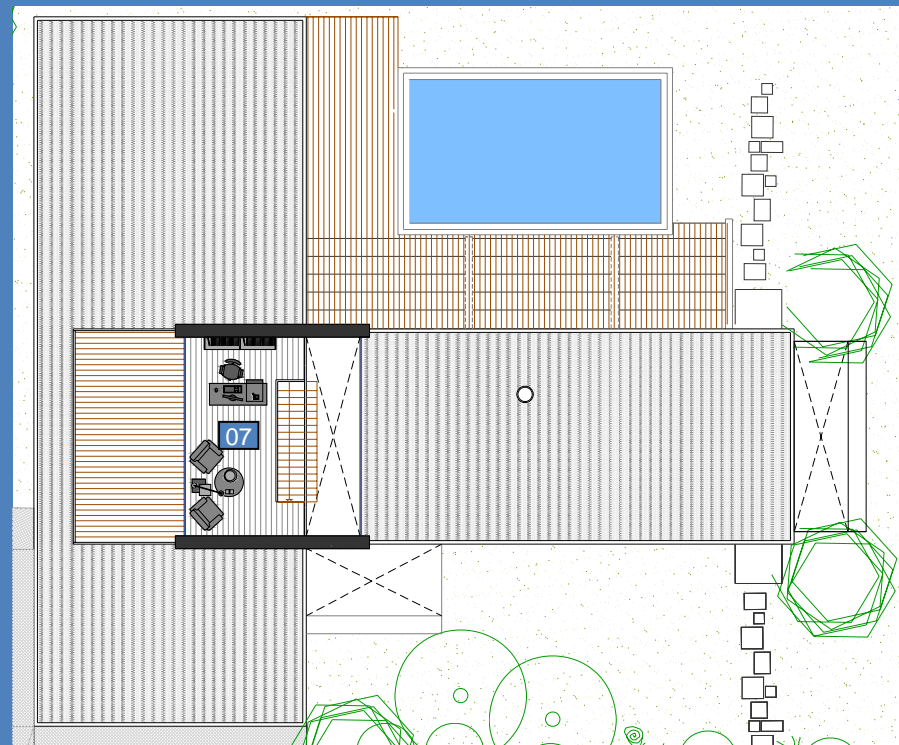


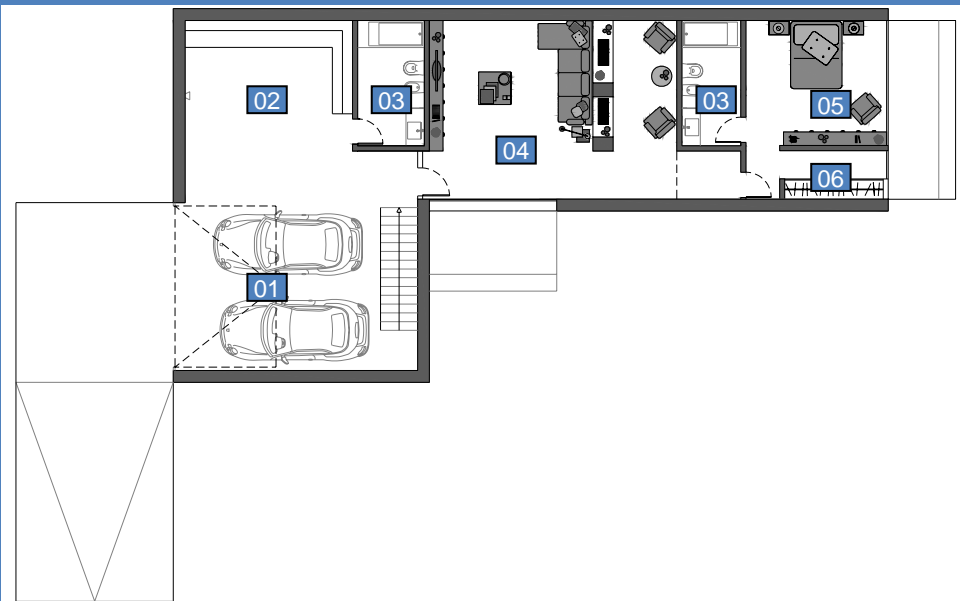


01	Living Room	38 m2
02	Dining Room	31 m2
03	Kitchen	30 m2
04	Room 1	16 m2
05	Room 2	16 m2
06	Suite Room	28 m2
07	Office	16 m2



A	Swimming Pool
01	Living Room
02	Dining Room
03	Kitchen
04	Room
05	Room
06	Suite Room
07	Office





01	Garage
02	Workshop
03	Bathroom
04	Living Area
05	Room
06	Closet

In the basement more than 70 m² with a too big windows, this is one solution, but you can build whatever you want, gym, cinema, or so, because this area is completely open to your creativity.

FINISHING

Living Room

- Flooring of Kambala
- Stairs for mezzanine with steps in Kambala wood
- Fireplace (3 faces of glass - 90 cm)
- Windows Thermal (Glass 8 mm Gray + 6 mm)
- White painting on walls and ceilings

Rooms

- Flooring of Kambala
- Windows Thermal (Glass 8 mm Gray + 6 mm)
- White painting on walls and ceilings
- Doors lacquered
- Hardrobes with doors lacquered
- Closet in suite

Office

- Flooring of Kambala
- Windows Thermal (Glass 8 mm Gray + 6 mm)
- White painting on walls and ceilings
- Terrace with 15 m2 in Deck
- Fence/guards glass and inox steel

Kitchen

- Kitchen furniture MDF Lacquered
- Top in glass lacquered
- Electrical equipment AEG
- Flooring epoxy
- Windows Thermal (Glass 8 mm Gray + 6 mm)

FINISHING

Bathroom

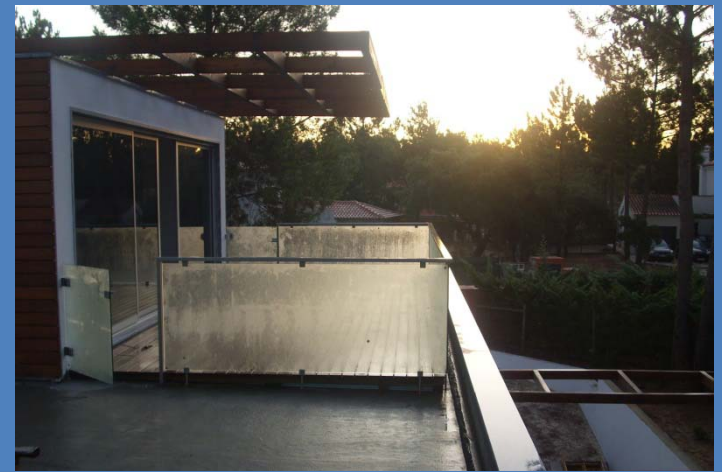
- Flooring epoxy
- WC suite bathtub (jacuzzi) and base shower
- WC bathtub and base shower
- Tap CIFIAL Model M3
- Ceramic sanitary suspended Valadares
- Flush Geberit inside the wall
- Tops in Silestone including the sink
- Windows Thermal (Glass 8 mm Gray + 6 mm)

Swimming Pool

- Pool with DECK (10 m x 5 m)
- Landscape with trees
- Lighting with Led

Firefox

- Alarm
- Central Vacuum
- Sound system (allows connecting ipod)
- Microphones (rooms for children)
- Video intercom
- Water heater/boiler (gas)
- Pre-installation of Air Conditioning





CUBOS &
DADOS